

PENNSYLVANIA GAME COMMISSION

PROJECT NO. PGC-051-22-01

STATE GAME LANDS #051

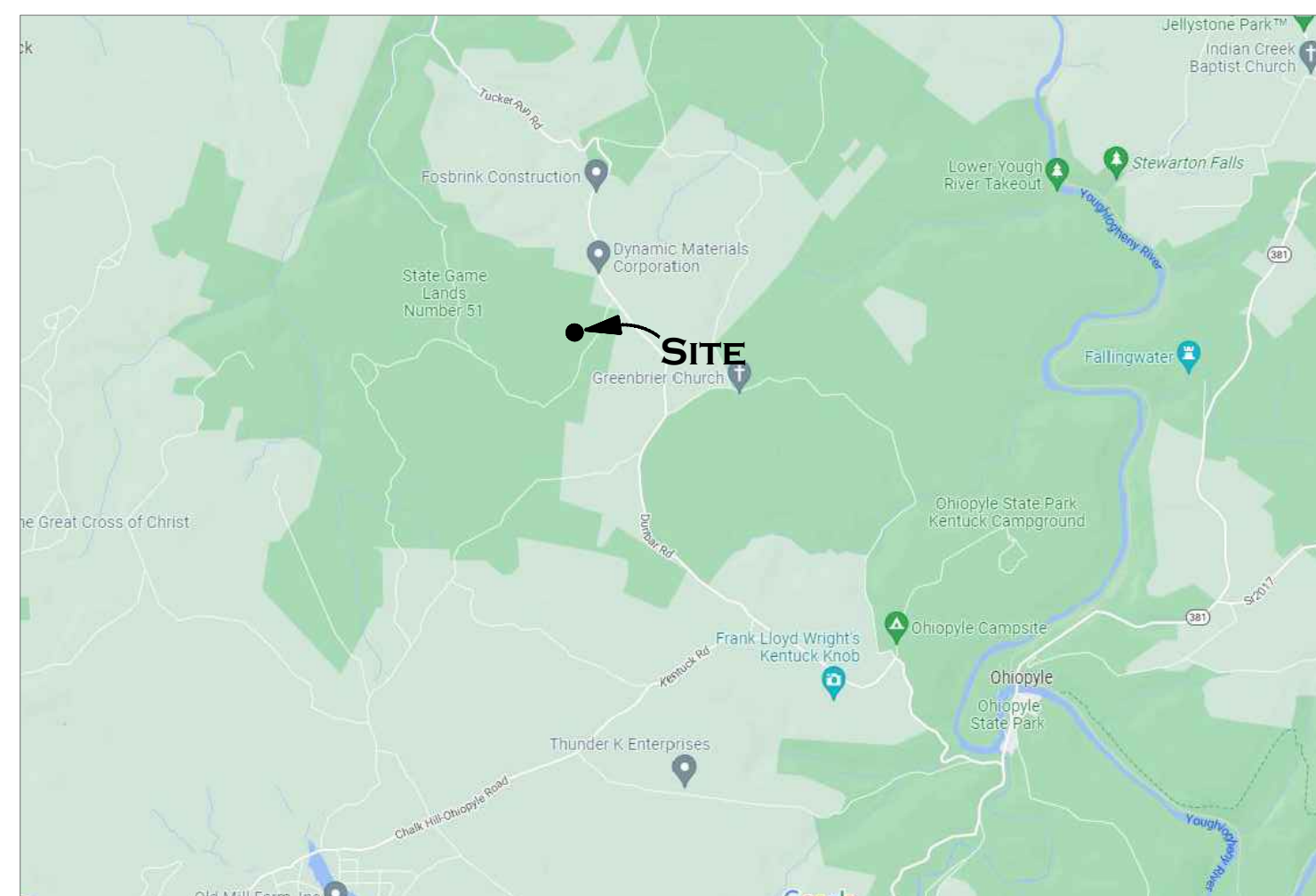
NEW 40' x 80' STORAGE BUILDING

DUNBR TOWNSHIP, FAYETTE COUNTY, PENNSYLVANIA

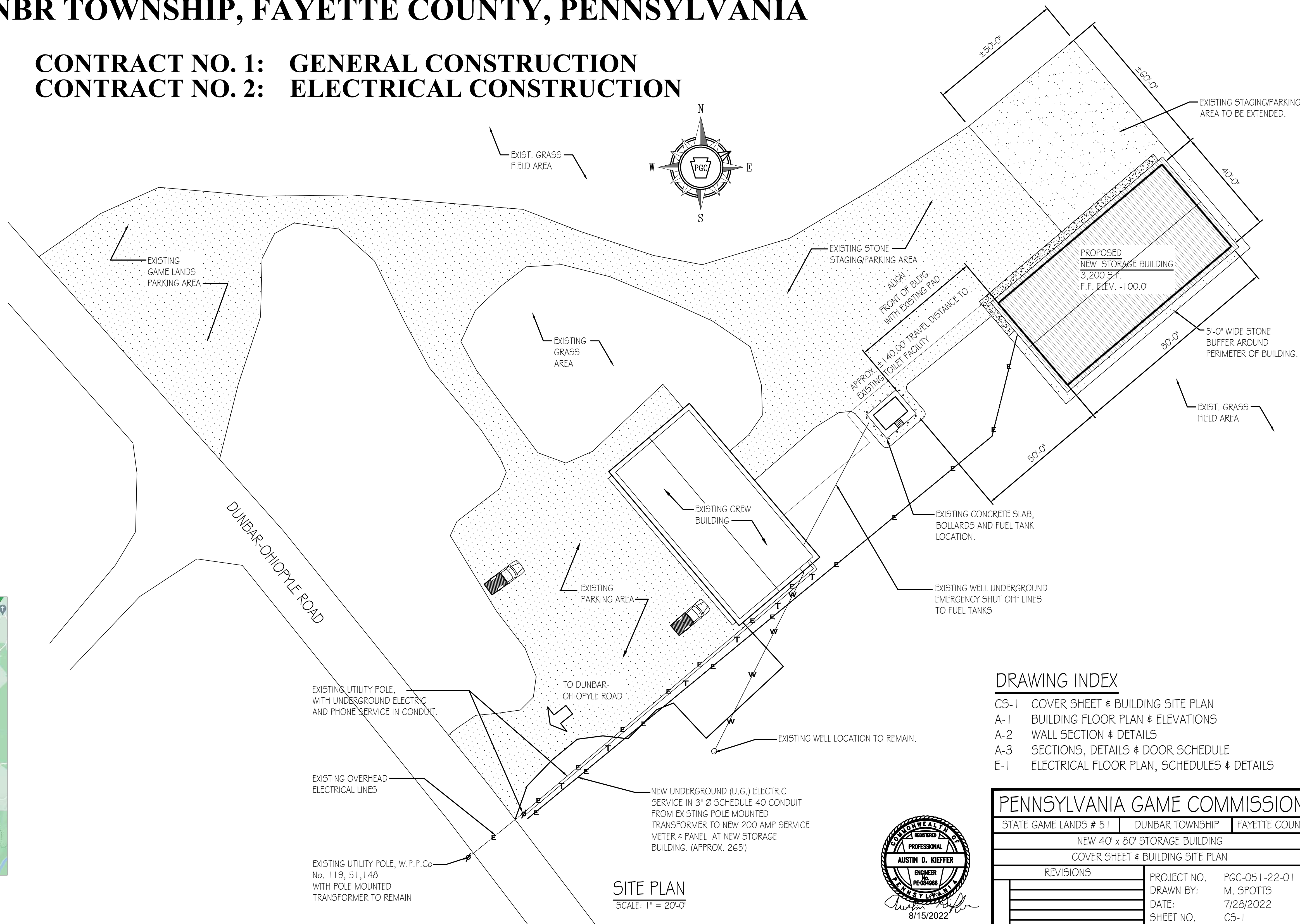
CONTRACT NO. 1: GENERAL CONSTRUCTION
CONTRACT NO. 2: ELECTRICAL CONSTRUCTION

SITE PLAN GENERAL NOTES:

1. UTILITY LINE LOCATIONS SHOWN ON THE DRAWINGS ARE APPROXIMATE. UNDERGROUND TELEPHONE, ELECTRIC, GAS, SANITARY SEWER, WATER AND STORMWATER DRAINAGE LINES MAY BE PRESENT AT SOME WORK LOCATIONS. FIELD VERIFICATION IS REQUIRED PRIOR TO ANY CONSTRUCTION. CONTACT PA ONE CALL AND COMPLY WITH ACT 287 (AS AMENDED) REGARDING LOCATIONS OF UNDERGROUND UTILITIES.
2. ALL WORK WITHIN THE PUBLIC RIGHT-OF-WAY SHALL BE CONDUCTED IN ACCORDANCE WITH THE REQUIREMENTS OF PENNDOT, THE LOCAL MUNICIPALITY AND THE CONTRACT DOCUMENTS.
3. CONTRACTOR SHALL COORDINATE WITH AFFECTED UTILITY COMPANIES IN THE EVENT ITEMS SUCH AS TEMPORARY POLE SUPPORT IS REQUIRED. THIS WORK SHALL BE COMPLETED AT NO ADDITIONAL COST TO THE OWNER.
4. EXISTING DRAINAGE FACILITIES SHALL REMAIN INTACT DURING CONSTRUCTION, UNLESS OTHERWISE DIRECTED BY THE ENGINEER.
5. ALL AREAS DISTURBED BY THE CONSTRUCTION WORK SHALL BE RESTORED IN ACCORDANCE WITH THE CONTRACT DOCUMENTS TO THEIR ORIGINAL CONDITION OR BETTER.
6. ALL DISTURBED AREAS NOT RECEIVING OTHER SURFACE TREATMENT SHALL BE GRADED, SEEDED, AND MULCHED.
7. CONTRACTOR SHALL REFER TO CONTRACT DOCUMENTS FOR SOIL EROSION & SEDIMENTATION CONTROL PLAN REQUIREMENTS.
8. MAINTAIN ACCESS TO DRIVEWAYS AND ENTRANCES LOCATED ALONG THE PROJECT.
9. THE CONTRACTOR SHALL ENSURE THAT ALL CONSTRUCTION VEHICLES (INCLUDING MATERIAL SUPPLIER VEHICLES) LEAVING THE PROJECT AREA HAVE MUD BUILDUP REMOVED FROM THE TIRES BEFORE EXITING ONTO PAVED ROADWAYS. ALL MUD TRACKED ONTO PAVED ROADWAYS SHALL BE IMMEDIATELY REMOVED FROM THE ROADWAY.



PROJECT VICINITY MAP
NOT TO SCALE

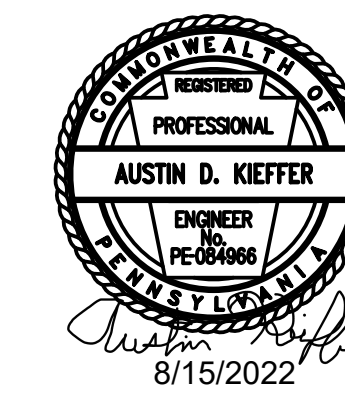


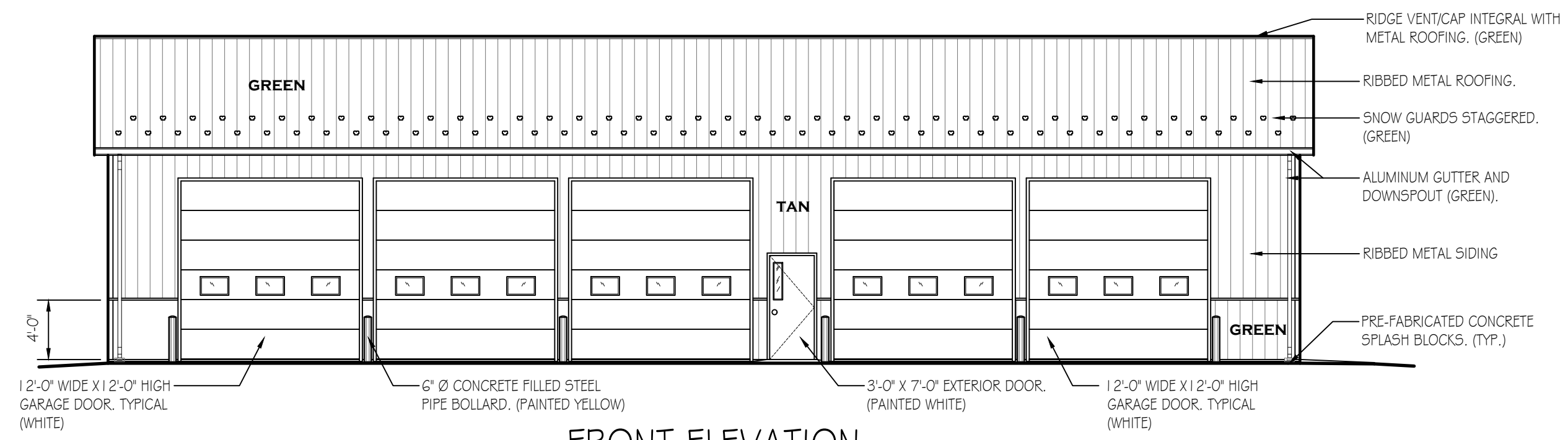
SITE PLAN
SCALE: 1" = 20'-0"

DRAWING INDEX

- CS-1 COVER SHEET & BUILDING SITE PLAN
- A-1 BUILDING FLOOR PLAN & ELEVATIONS
- A-2 WALL SECTION & DETAILS
- A-3 SECTIONS, DETAILS & DOOR SCHEDULE
- E-1 ELECTRICAL FLOOR PLAN, SCHEDULES & DETAILS

PENNSYLVANIA GAME COMMISSION		
STATE GAME LANDS # 51	DUNBAR TOWNSHIP	FAYETTE COUNTY
NEW 40' x 80' STORAGE BUILDING		
COVER SHEET & BUILDING SITE PLAN		
REVISIONS	PROJECT NO.	PGC-051-22-01
	DRAWN BY:	M. SPOTTIS
	DATE:	7/28/2022
	SHEET NO.	CS-1





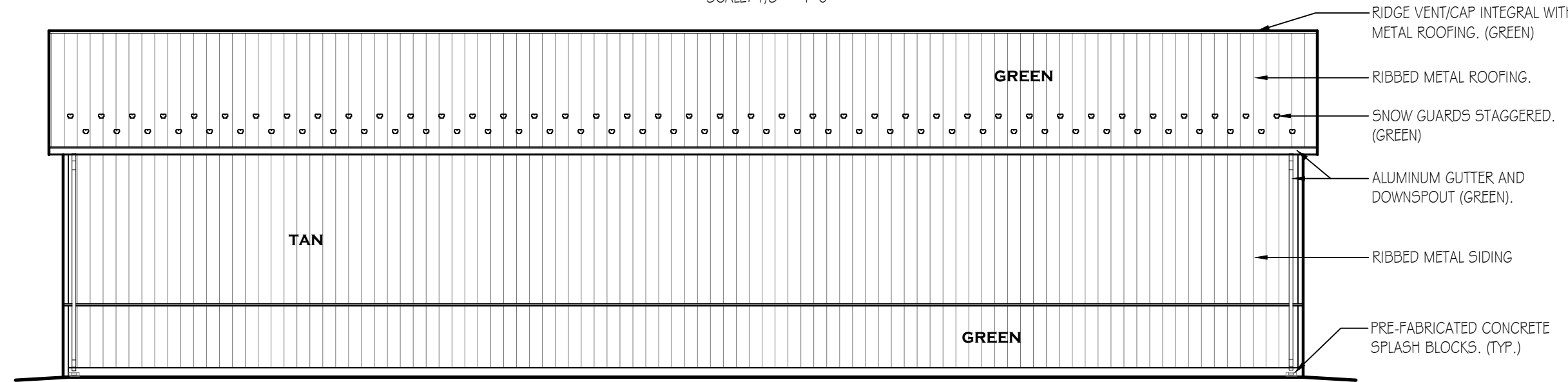
FRONT ELEVATION

SCALE: 1/8" = 1'-0"



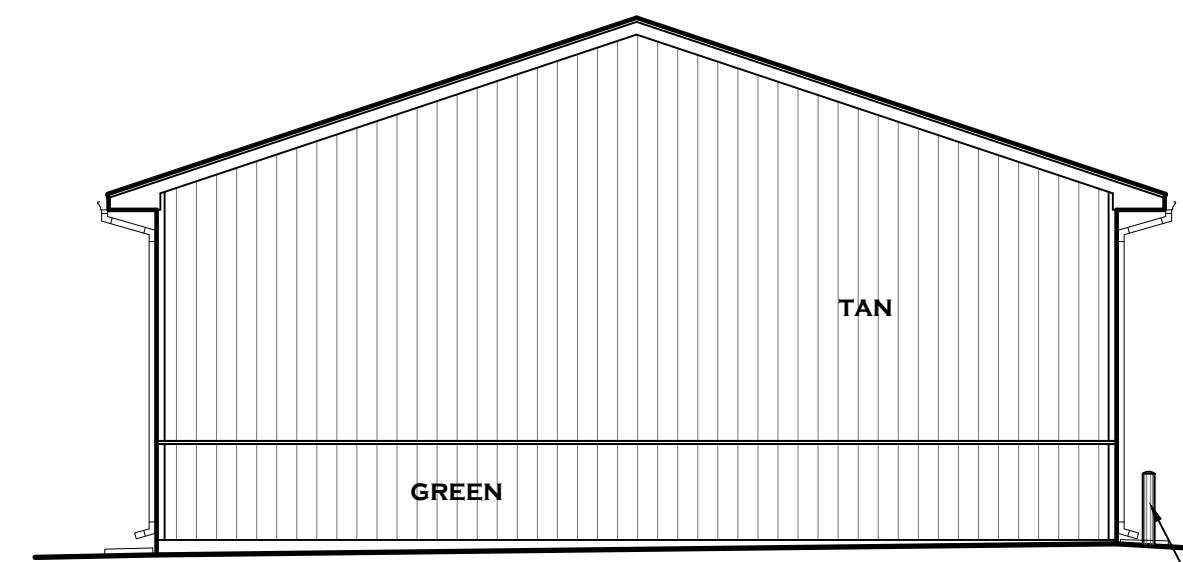
RIGHT ELEVATION

SCALE: 1/8" = 1'-0"



REAR ELEVATION

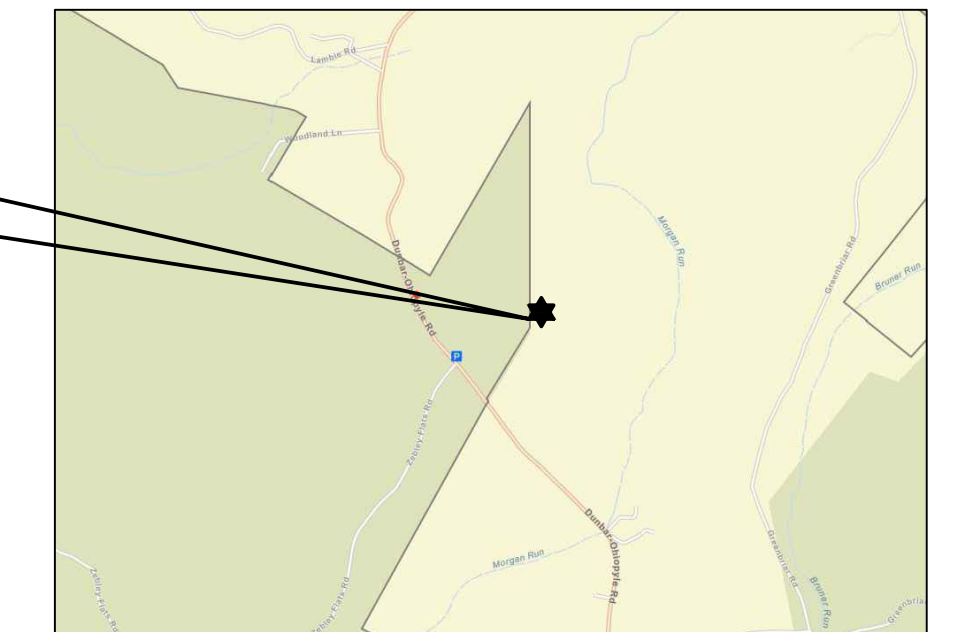
SCALE: 1/8" = 1'-0"



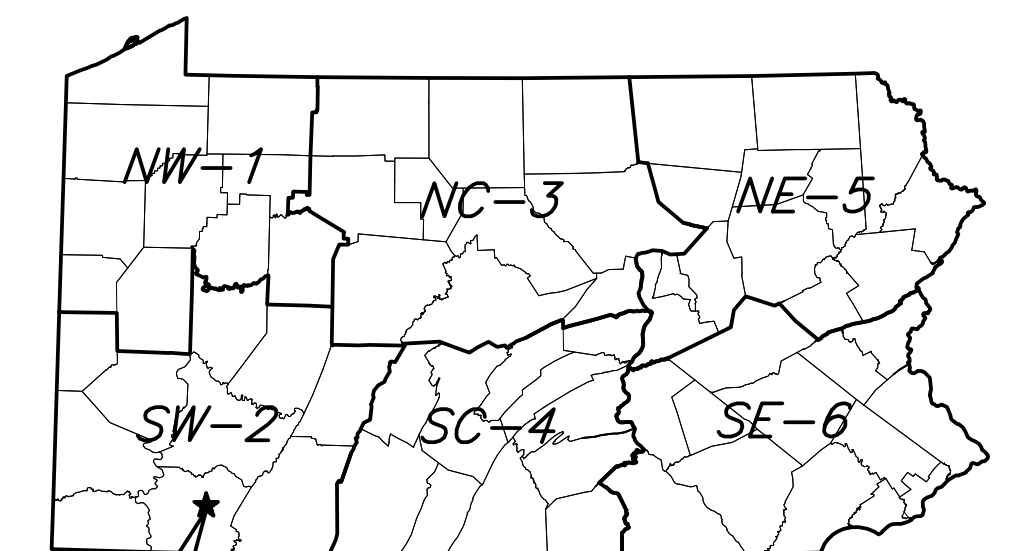
LEFT ELEVATION

SCALE: 1/8" = 1'-0"

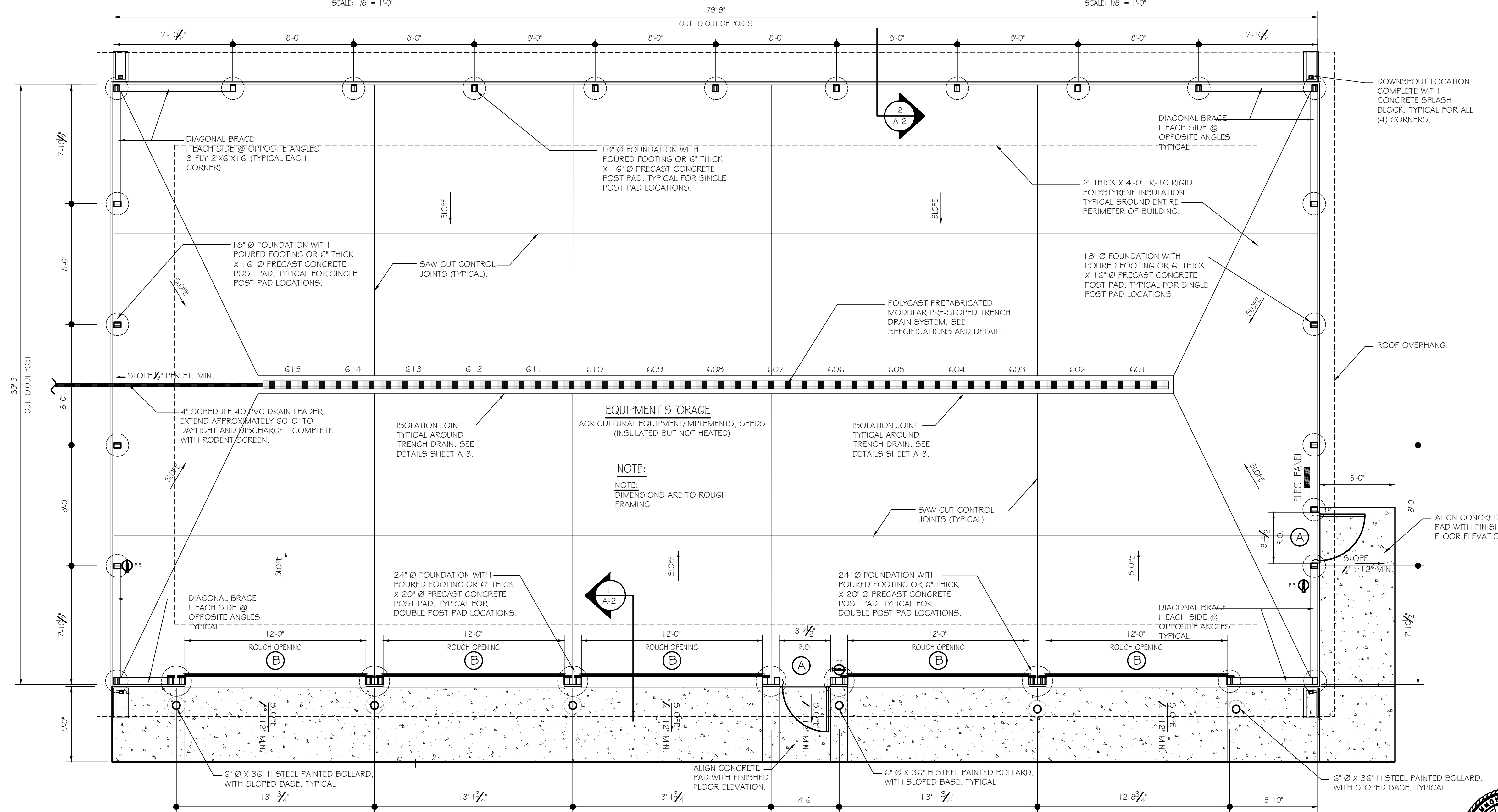
PROJECT LOCATION
STATE GAME LANDS No. 51
268 DUNBAR OHIOPILE ROAD
DUNBAR, PA 15431
FAYETTE COUNTY



PROJECT LOCATION PLAN
NOT TO SCALE

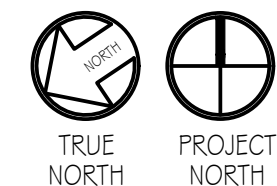


PROJECT LOCATION
STATE GAME LANDS No. 51
★ = GEO N39.9146947-79.551317°W
PROJECT MAP
NOT TO SCALE



FLOOR PLAN

SCALE: 1/4" = 1'-0"



BUILDING CODE SUMMARY

Code: International Building Code, 2018 edition

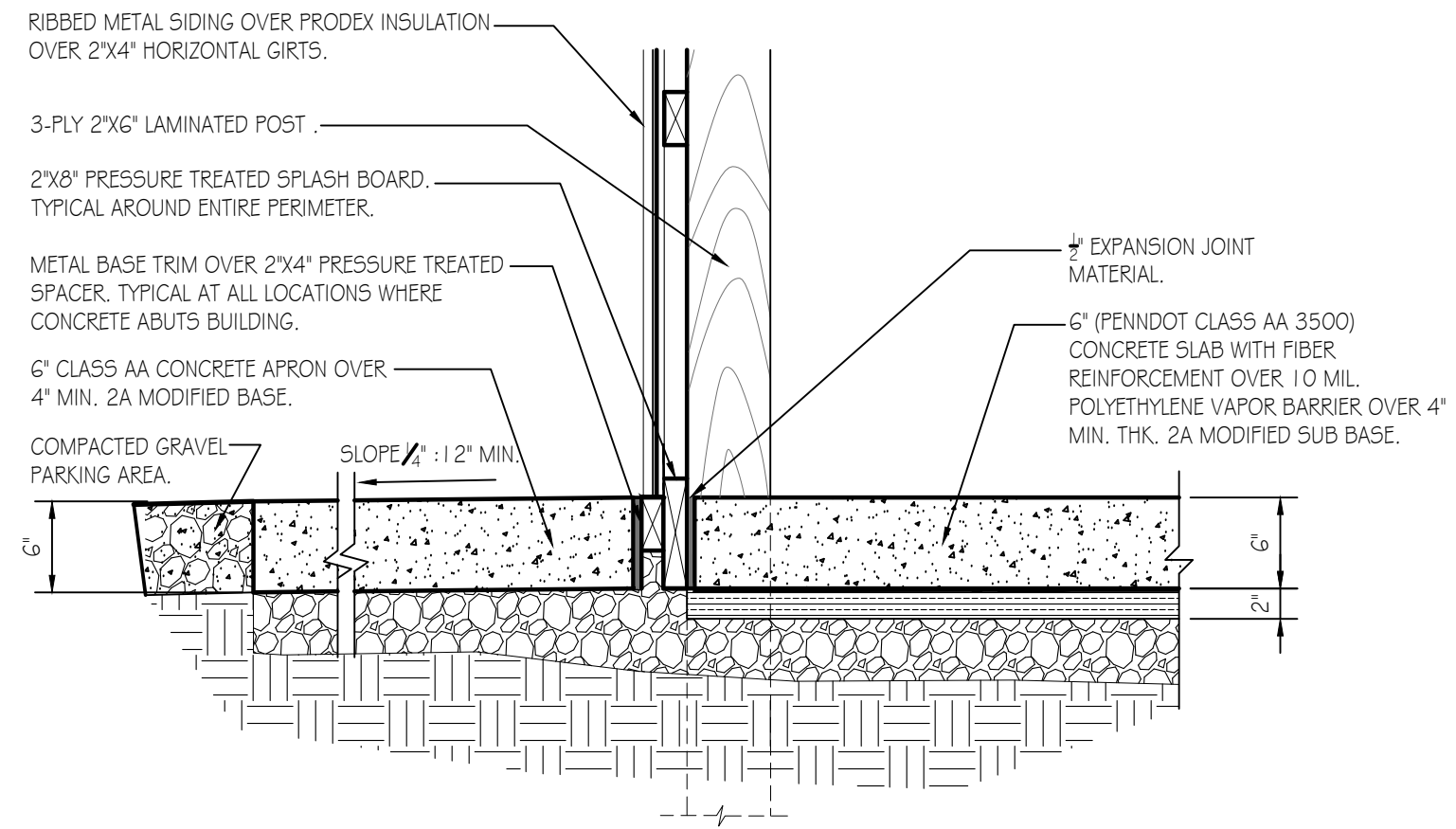
Scope: Construction of a new storage building on State Game Lands No. 051 in Dunbar Township, Fayette County. The new storage building will house vehicles, excavation equipment, implements and tools necessary for maintaining state game land grounds and roadways.

Summary:
Use & Occupancy Group: 312.1 Agricultural Building/Utility and Miscellaneous Group U
Construction Type: VB (Table G01)
New Building Area: 3,200s.f.
Allowable Area: 5,500 s.f.
Building Stories: 1 Story, No basement, Allowable Stories: 1 (504.4)
Fire Protection: No fire suppression, not required.
Fire Extinguishers: Units of "A" = 3,200 / 1,500 = 2.13 ~ 3 (Table 906.3(1)) Fire extinguisher shall be provided at each of the two building exits and one at the opposite end of building near OH door.
Storage, Occupancy Factor = 300 gross
3,200 S.F./300 = 10.6 ~ 11 persons

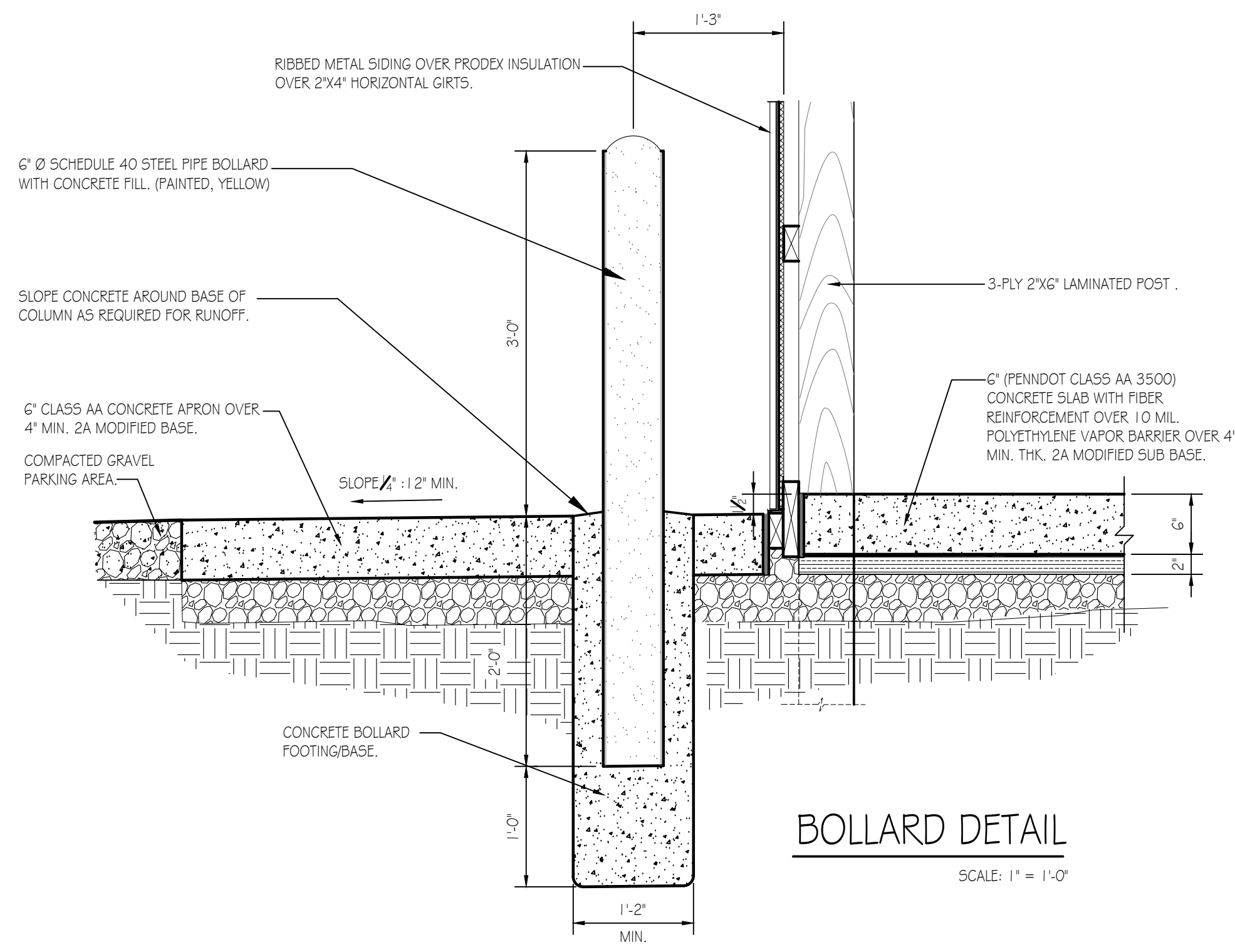
Occupant Load:
Egress Width: 72 x 0.2 inches = 14.4 inches min. (1005.3.2).
Means Of Egress: 2 Exits provided = 72 inches; 1 required (1007.1, 1 Table 1015.1).
Accessibility: Not required, agricultural building. (Chapter 11)
Energy Efficiency: Building/structure will not be heated nor air conditioned.
Low-Energy Building. (IECC) (C402.1.1)



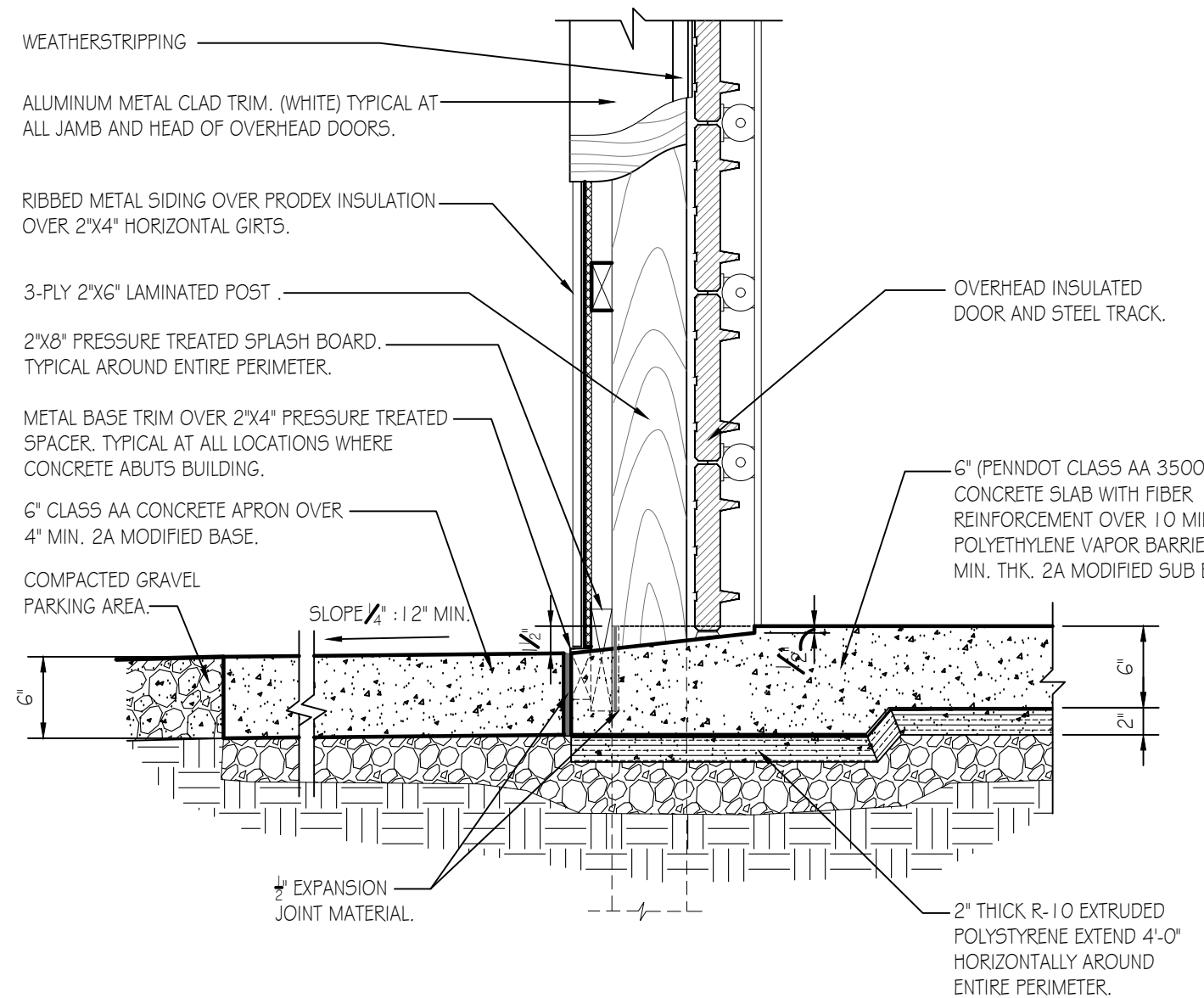
PENNSYLVANIA GAME COMMISSION		
STATE GAME LANDS # 51	DUNBAR TOWNSHIP	FAYETTE COUNTY
NEW 40' x 80' STORAGE BUILDING		
BUILDING PLAN & ELEVATIONS		
REVISIONS	PROJECT NO.	PGC-051-22-01
	DRAWN BY:	M. SPOTTS
	DATE:	7/28/2022
	SHEET NO.	A-1



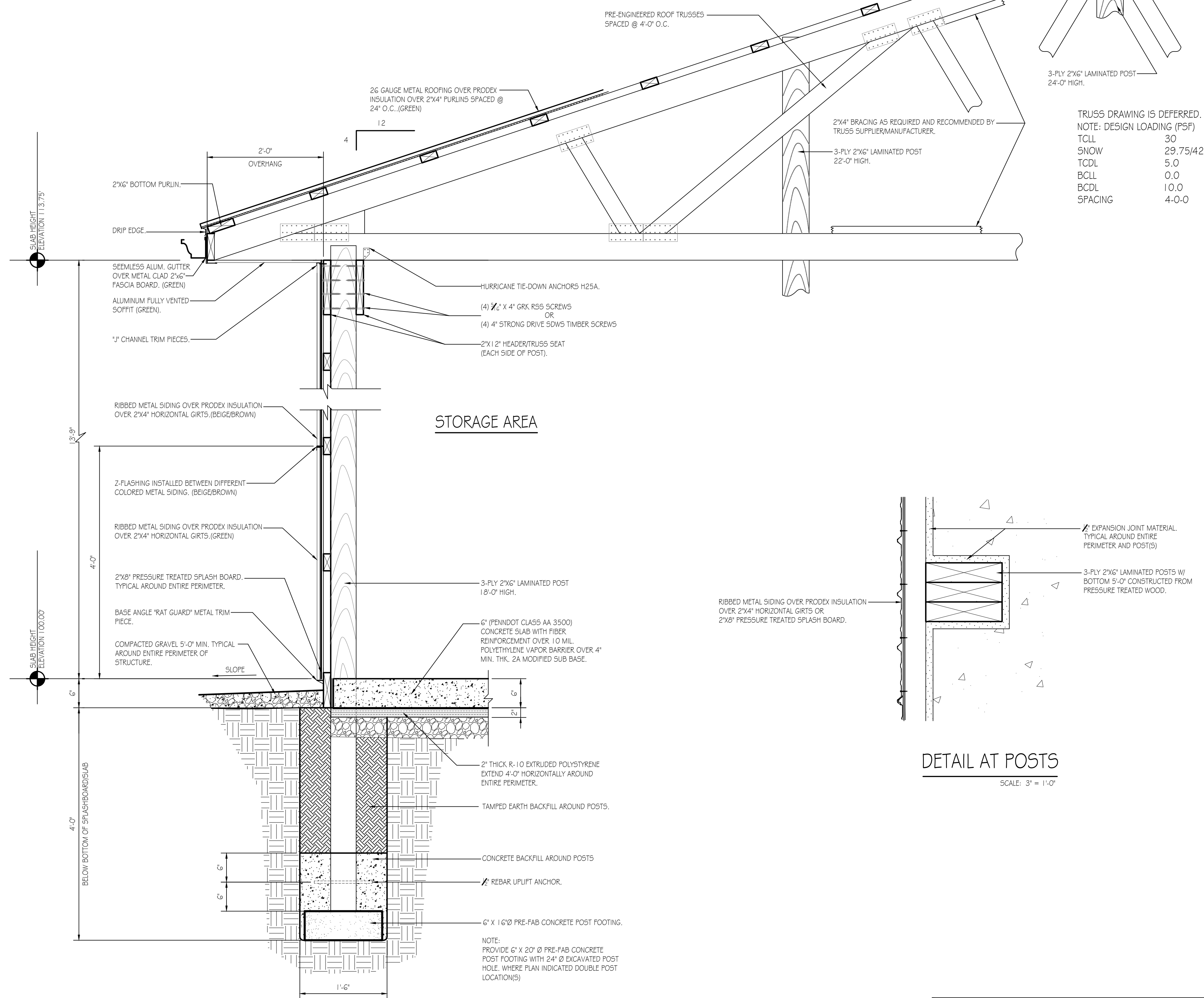
DETAIL @ CONCRETE SIDEWALK
SCALE: 1" = 1'-0"



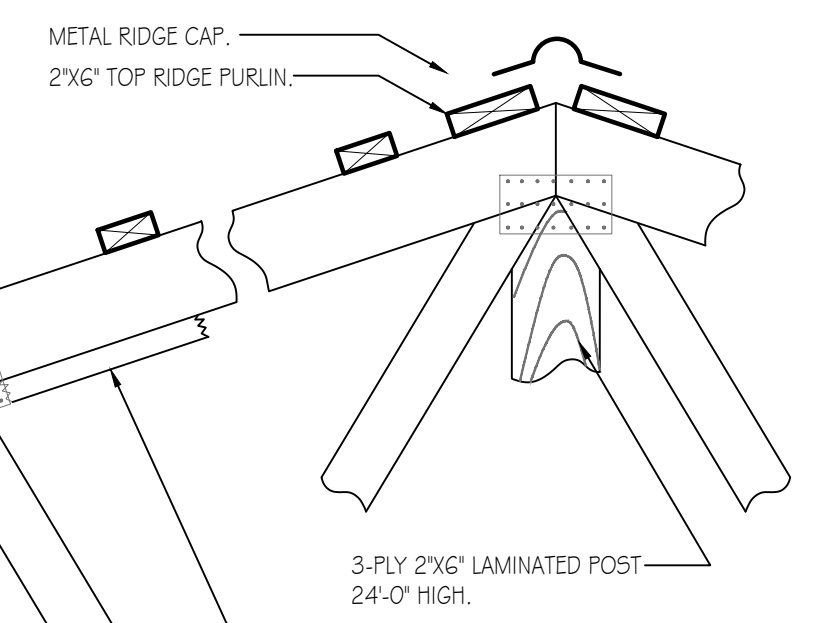
BOLLARD DETAIL
SCALE: 1" = 1'-0"



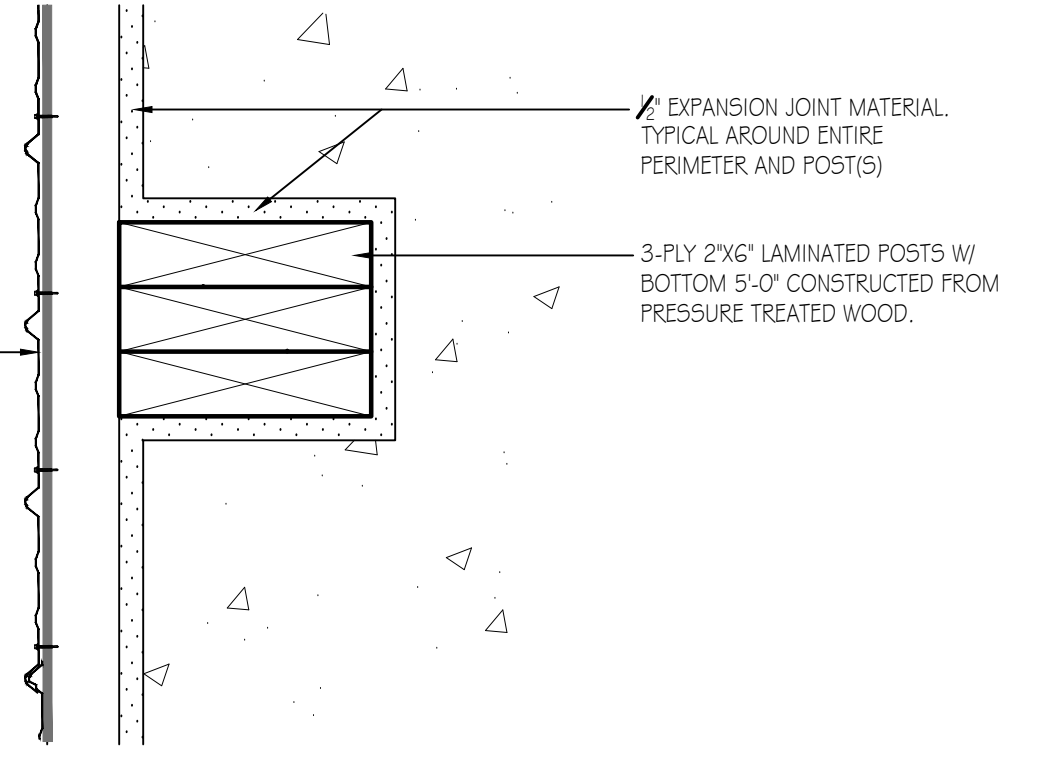
O.H. DOOR SILL AND JAMB DETAIL
SCALE: 1" = 1'-0"



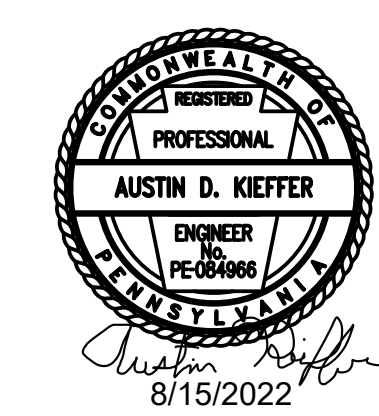
WALL SECTION DETAIL
SCALE: 1" = 1'-0"



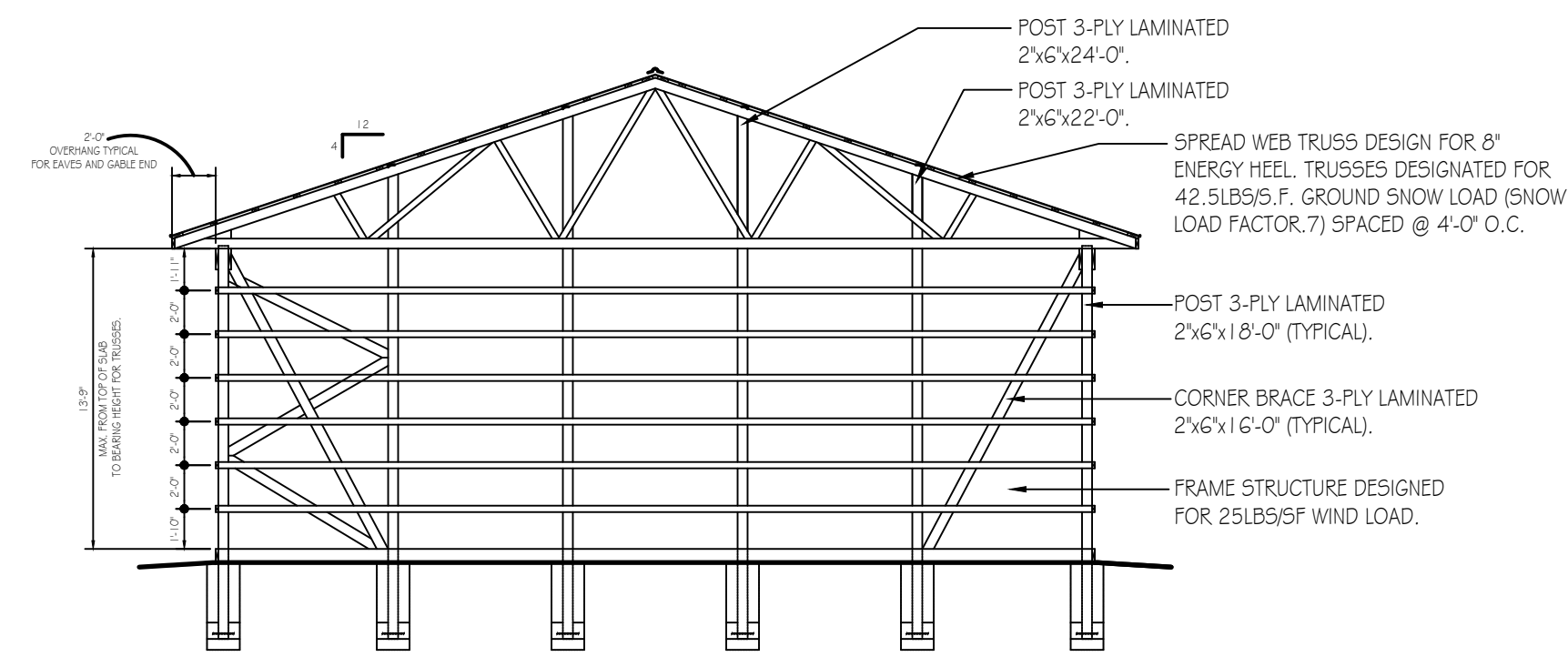
TRUSS DRAWING IS DEFERRED.
NOTE: DESIGN LOADING (PSF)
TCLL 30
SNOW 29.75/42
TCDL 5.0
BCLL 0.0
BCDL 10.0
SPACING 4-0-0



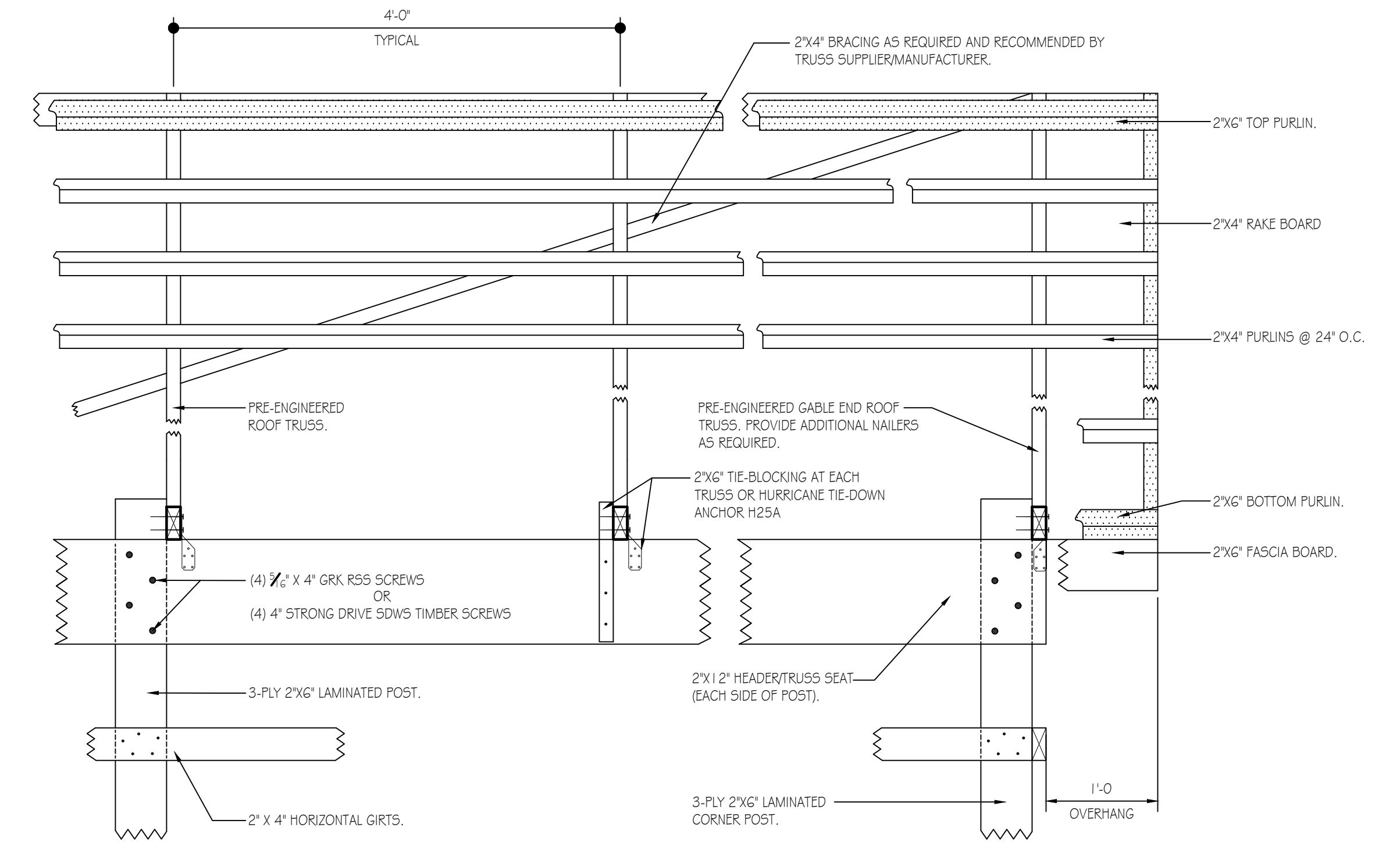
DETAIL AT POSTS
SCALE: 3" = 1'-0"



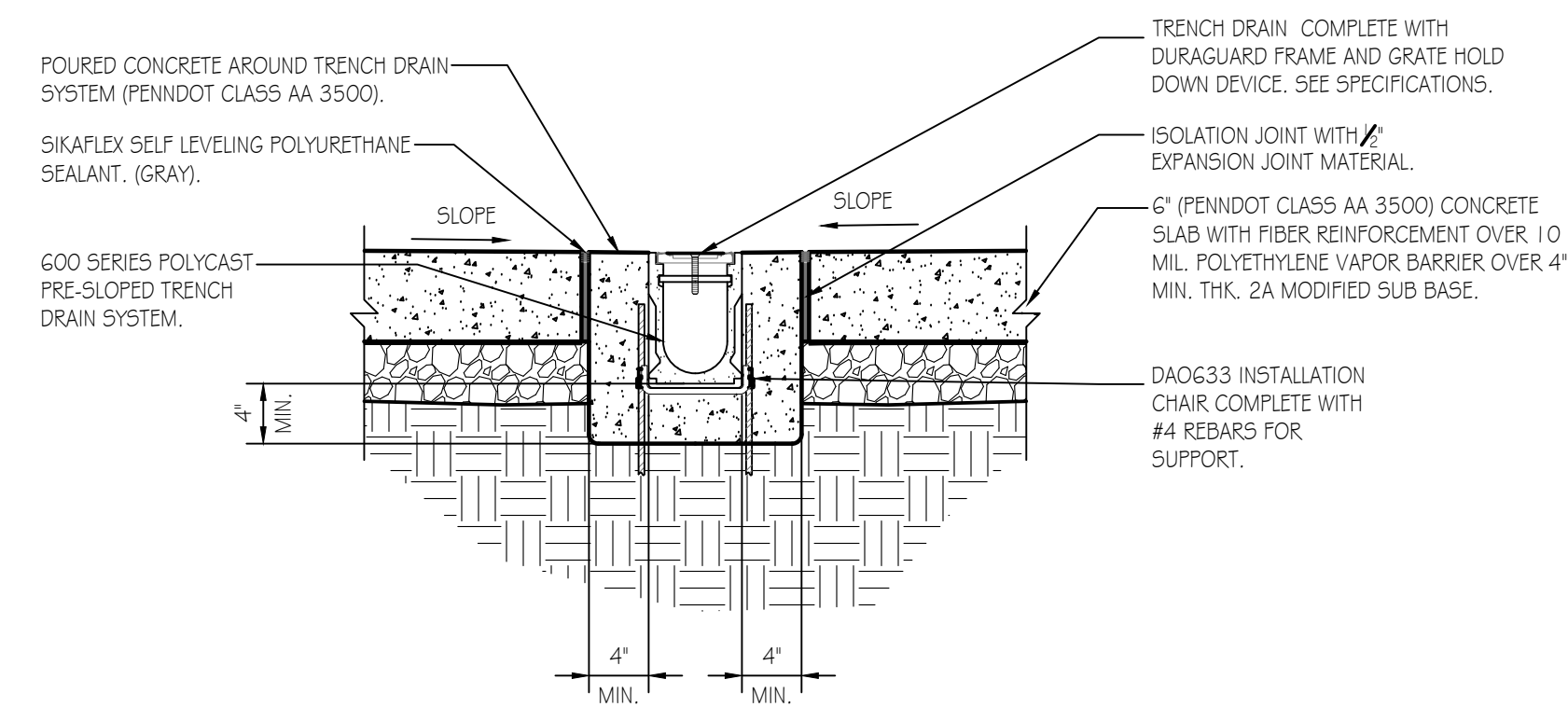
PENNSYLVANIA GAME COMMISSION		
STATE GAME LANDS # 51	DUNBAR TOWNSHIP	FAYETTE COUNTY
NEW 40' x 80' STORAGE BUILDING		
WALL SECTION & DETAILS		
REVISIONS	PROJECT NO.	PGC-051-22-01
	DRAWN BY:	M. SPOTTS
	DATE:	7/28/2022
	SHEET NO.	A-2



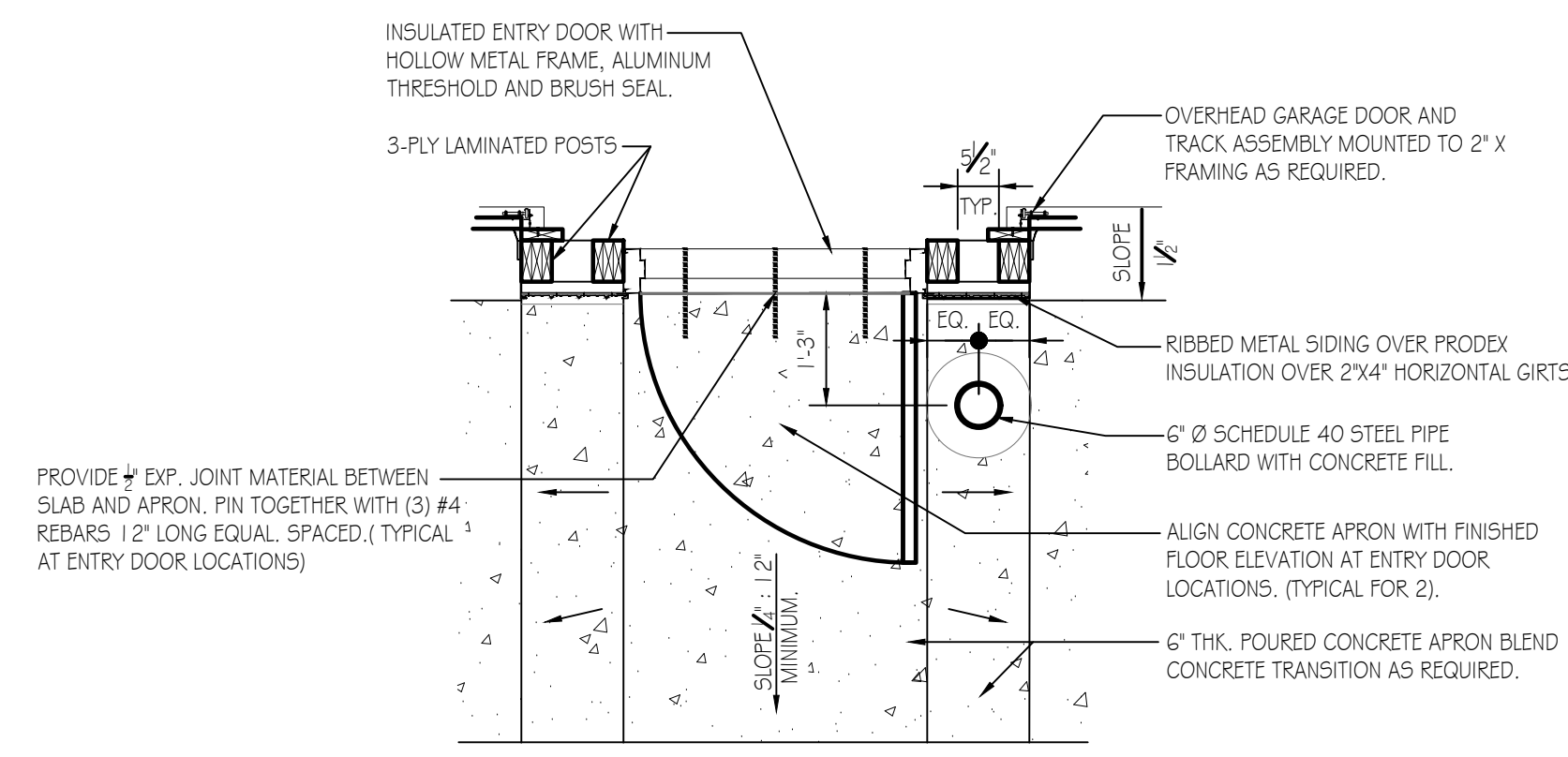
TYPICAL SECTION
 SCALE: 1/8" = 1'-0"



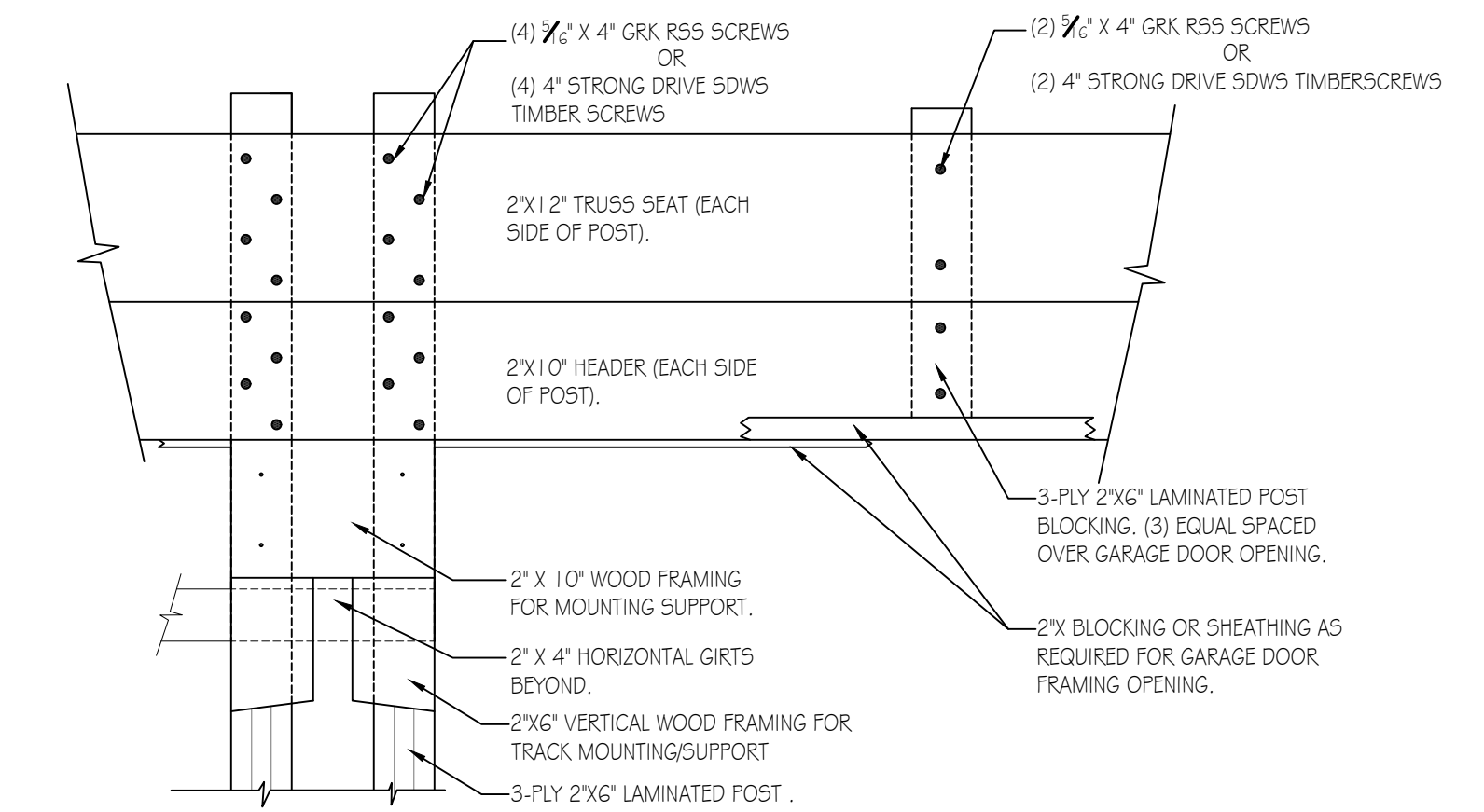
TYPICAL ROOF FRAMING/BRACING DETAIL
 SCALE: 1" = 1'-0"



TRENCH DRAIN DETAIL
 SCALE: 1" = 1'-0"

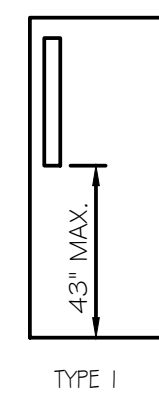


DETAIL AT ENTRY DOOR
 SCALE: 1/2" = 1'-0"



GARAGE DOOR FRAMING DETAIL
 SCALE: 1" = 1'-0"

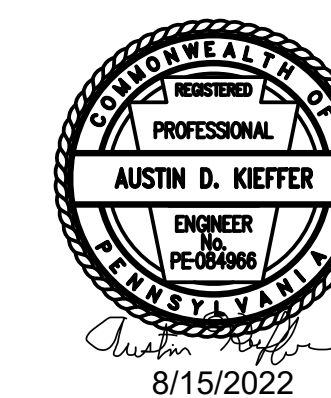
Mark	Type	W	H	T	Hand	Qty	Remarks
A	I	3'-0"	7'-0"	1-3/4"	RHR	2	INSULATED CORE, PANIC BOLT, CLOSER
B	O.H.	12'-0"	12'-0"	SEE SPECIFICATIONS		5	INSULATED SECTIONAL OVERHEAD DOOR



DOOR SCHEDULE NOTES:

- 1) ALL CORES TO BE BEST CORMAX, 7 PIN COMPATIBLE.
- 2) SEE PROJECT SPECIFICATIONS FOR DOOR FRAMES & DOOR HARDWARE REQUIRED.

DOOR SCHEDULE
 N.T.S.



PENNSYLVANIA GAME COMMISSION		
STATE GAME LANDS # 51	DUNBAR TOWNSHIP	FAYETTE COUNTY
NEW 40' x 80' STORAGE BUILDING		
SECTIONS, DETAILS & DOOR SCHEDULE		
REVISIONS	PROJECT NO.	PGC-051-22-01
	DRAWN BY:	M. SPOTTS
	DATE:	7/28/2022
	SHEET NO.	A-3

LOAD CENTER - 200A
VOLTAGE: 240/120V
SERVICE FEEDER SIZE: 4-#250 kcmil

ALL EXPOSED WIRING IN MIN. 3/4" Ø CONDUIT.

CIRCUIT NO.	CIRCUIT BREAKERS		200 AMP Main Breaker Panel	Wiring	
	POLES	AMPS		No./Size	Conduit Size
1			220 VOLT WELDING OUTLET	3 - #6	1-1/4"
2	2	50	220 VOLT WELDING OUTLET	3 - #6	1-1/4"
3			STORAGE RECEPTACLES, EAST SIDE	3 - #12	3/4"
4	2	50	STORAGE RECEPTACLES, NORTH SIDE	3 - #12	3/4"
5			STORAGE RECEPTACLES, WEST SIDE	3 - #12	3/4"
6			STORAGE RECEPTACLES, SOUTH SIDE	3 - #12	3/4"
7			STORAGE RECEPTACLES, SOUTH SIDE	3 - #12	3/4"
8			STORAGE RECEPTACLES, SOUTH SIDE	3 - #12	3/4"
9			STORAGE RECEPTACLES, SOUTH SIDE	3 - #12	3/4"
10			STORAGE RECEPTACLES, SOUTH SIDE	3 - #12	3/4"
11			STORAGE RECEPTACLES, SOUTH SIDE	3 - #12	3/4"
12			STORAGE RECEPTACLES, SOUTH SIDE	3 - #12	3/4"
13			STORAGE RECEPTACLES, SOUTH SIDE	3 - #12	3/4"
14			STORAGE RECEPTACLES, SOUTH SIDE	3 - #12	3/4"
15			STORAGE RECEPTACLES, SOUTH SIDE	3 - #12	3/4"
16-24			SPARE SPACES		

ELECTRICAL WIRING SYMBOLS

- GFI RECEPTACLE
- DUPLEX OUTLET, SPLIT CIRCUIT
- DUPLEX OUTLET
- 220 VOLT WELDER OUTLET (VERIFY TYPE & LOCATION WITH PGC CREW)
- HOME RUN CIRCUIT NUMBER
- JUNCTION BOX
- PHOTO CELL
- EXIT LIGHTING W/ BATTERY BACKUP
- SWITCH
- SWITCH 3-WAY

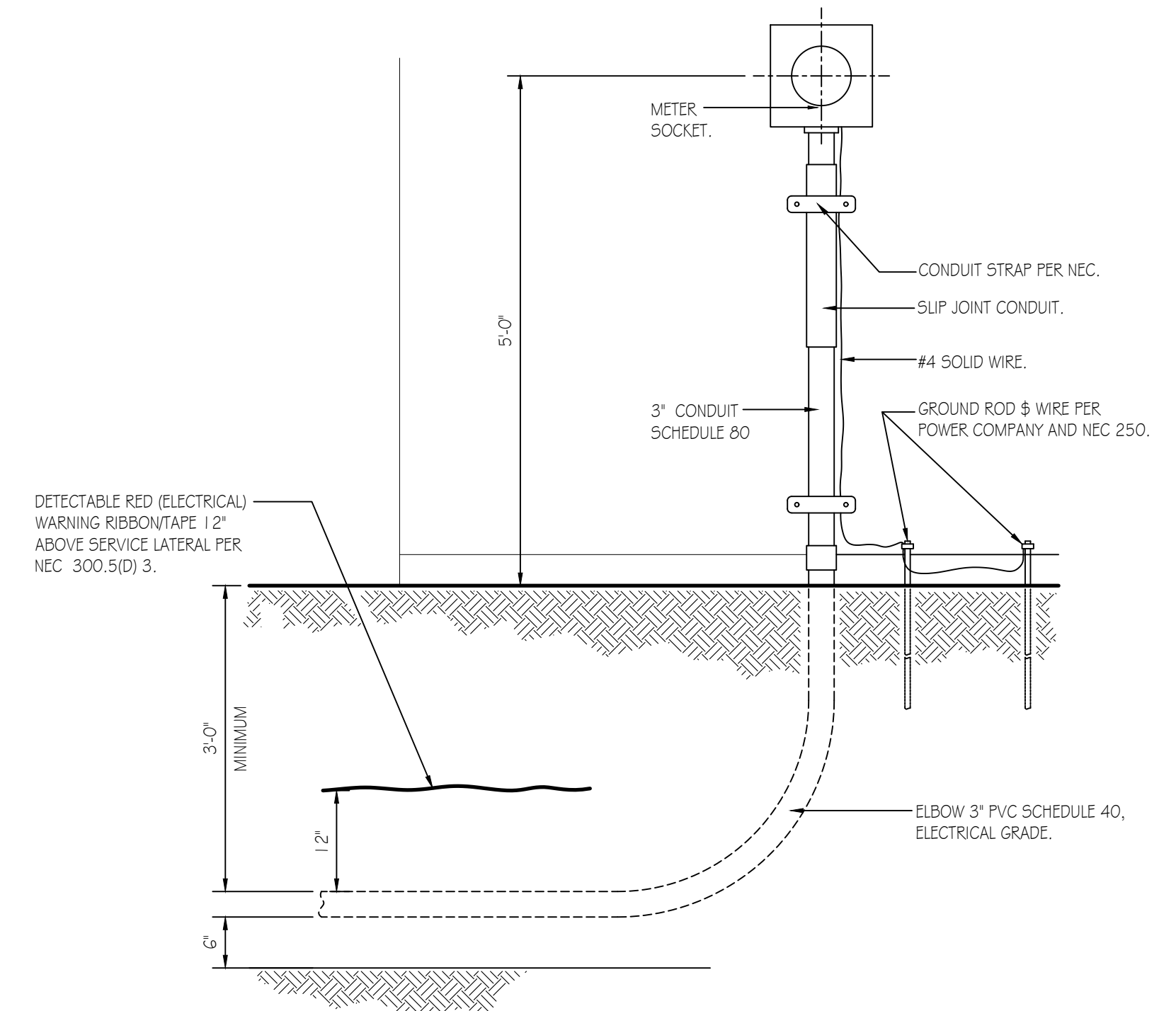
GENERAL ELECTRICAL NOTES:

- FURNISH AND INSTALL SOLID COPPER CONDUCTORS AS SPECIFIED; NO ALUMINUM AND NO STRANDED. MC CABLE IS APPROVED FOR ALL HOME RUN CIRCUITS IF NEATLY INSTALLED.
- ALL CONDUCTORS FOR 120V CIRCUITS OVER 100' IN LENGTH SHALL BE MINIMUM #10AWG. ALL CONDUCTORS FOR 120V CIRCUITS OVER 150' IN LENGTH SHALL BE MINIMUM #8AWG. CONTRACTOR IS RESPONSIBLE FOR VERIFICATION OF FINAL CIRCUIT LENGTHS AND CORRESPONDING WIRE SIZE TO ENSURE VOLTAGE DROP IS MAINTAINED WITHIN NEC LIMITS.
- ALL WORK SHALL BE PERFORMED AS REQUIRED BY APPLICABLE SECTION OF THE NATIONAL ELECTRICAL CODE (NEC), LATEST EDITION, AND ALL GOVERNING UCC BUILDING CODES AND REGULATIONS.
- PROVIDE GROUNDING AND BONDING FOR ELECTRICAL SYSTEMS. ELECTRICAL COMPONENTS, DEVICES AND ACCESSORIES SHALL BE LISTED AND LABELED AS DEFINED IN NFPA 70 AND COMPLY WITH UL 467 FOR GROUNDING AND BONDING MATERIALS AND EQUIPMENT. INSTALL INSULATED EQUIPMENT GROUNDING CONDUCTORS ALL FEEDERS AND BRANCH CIRCUITS, LIGHTING CIRCUITS, RECEPTACLE CIRCUITS SINGLE PHASE MOTOR AND APPLIANCE BRANCH CIRCUITS, ARMORED AND METAL-CLAD CABLE RUNS AND AS REQUIRED BY NFPA 70.
- PROVIDE ALL HANGERS AND SUPPORTS FOR ELECTRICAL SYSTEMS, INCLUDING STEEL SLOTTED SUPPORT SYSTEMS, CONDUIT AND CABLE SUPPORT DEVICES, SUPPORTS FOR CONDUCTORS IN VERTICAL CONDUIT. HANGERS AND SUPPORTS SHALL HAVE A FLAME RATING OF CLASS 1 AND BE SELF-EXTINGUISHING ACCORDING TO ASTM D 635.

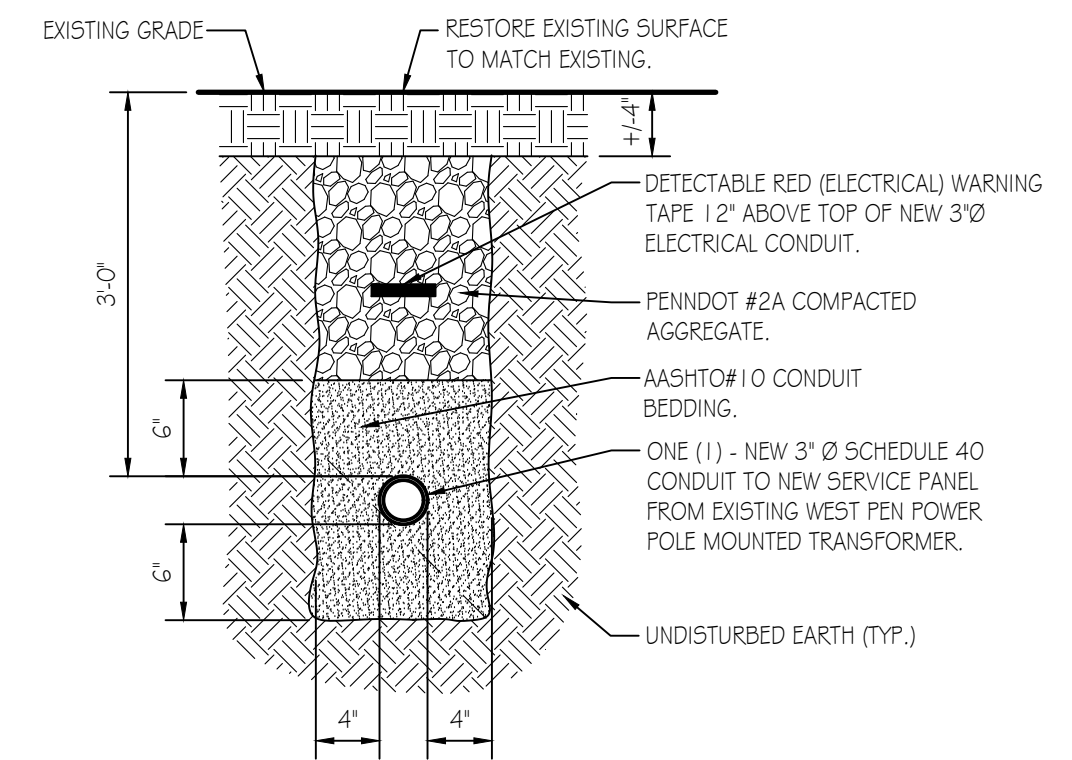
LIGHTING FIXTURE SCHEDULE

MARK	QTY	LIGHTING FIXTURE	MODEL
A	2	EXIT & EMERGENCY COMBO LIGHT W/ BATTERIES & REMOTE HEAD.	LITHONIA ECRLEDHO M6 w/ELA LED WF M12
B	2	SECURITY MOTION, WALL MOUNT/OUTSIDE UNIT 26 WATT LED	RAB 5MSLE5 2X13 BRONZE
C	10	15.25' X 22" 4 LAMP LED HIGH BAY	LITHONIA EBH 15000LM 5D080 MD OZ10 40K 80 CRI

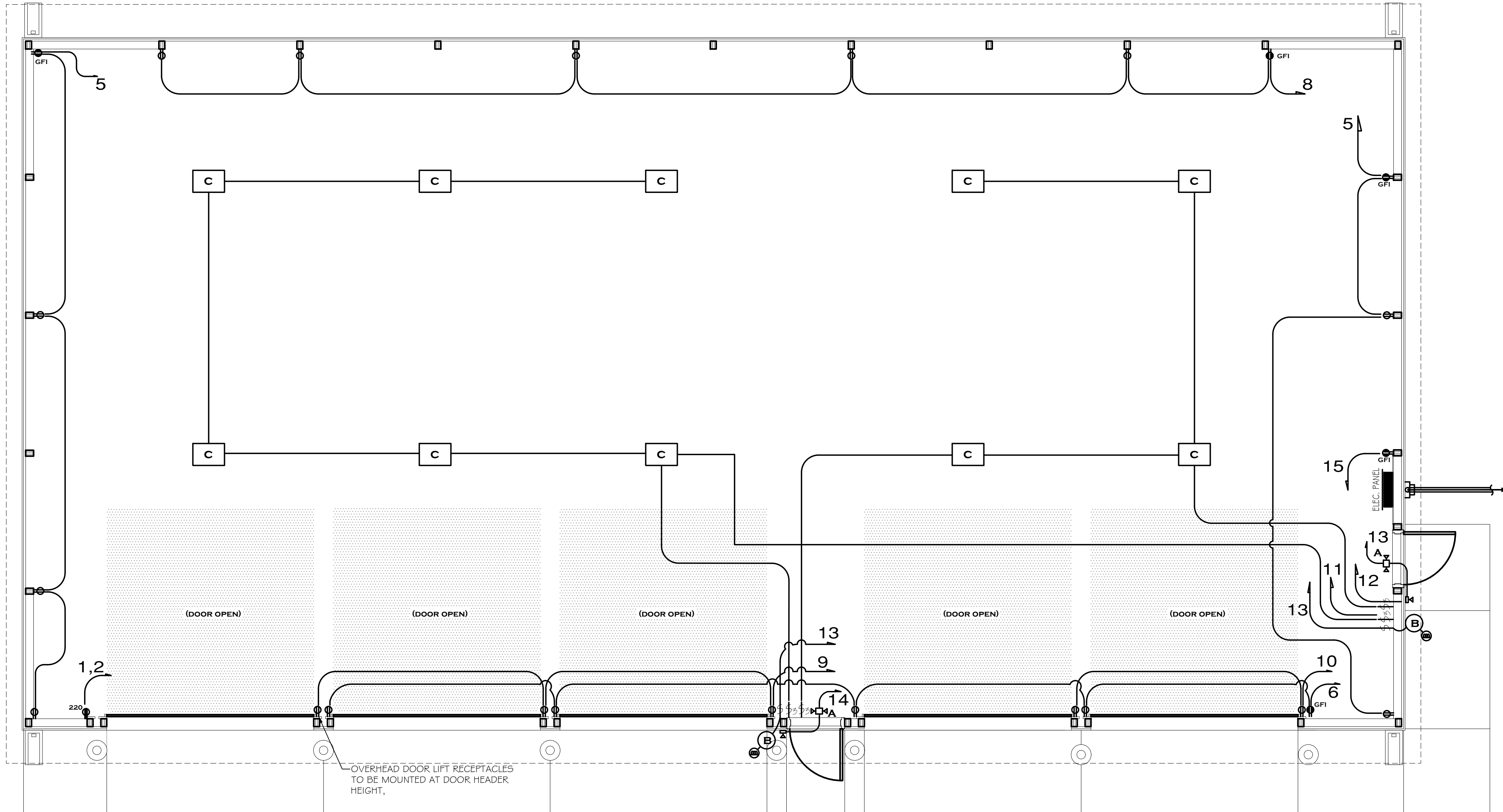
LIGHTING FIXTURE SCHEDULE NOTES:
1. RECEPTACLES AND SWITCH MOUNTING HEIGHTS - 48" A.F.F.



SERVICE DETAIL
NO SCALE

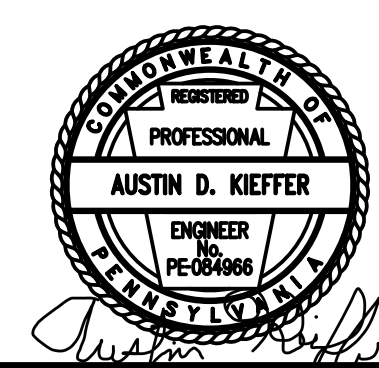
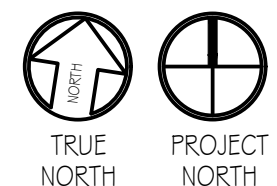


TYPICAL ELECTRICAL TRENCH DETAIL
NO SCALE



NEW STORAGE BUILDING FLOOR PLAN - ELECTRICAL PLAN

SCALE: 1/4" = 1'-0"



PENNSYLVANIA GAME COMMISSION		
STATE GAME LANDS # 51	DUNBAR TOWNSHIP	FAYETTE COUNTY
NEW 40' x 80' STORAGE BUILDING		
ELECTRICAL FLOOR PLAN, SCHEDULES & DETAILS		
REVISIONS	PROJECT NO.	PGC-051-22-01
	DRAWN BY:	M. SPOTTS
	DATE:	7/28/2022
	SHEET NO.	E-1